

## *Tools needed:*

### #2 Standard Phillips Screwdriver

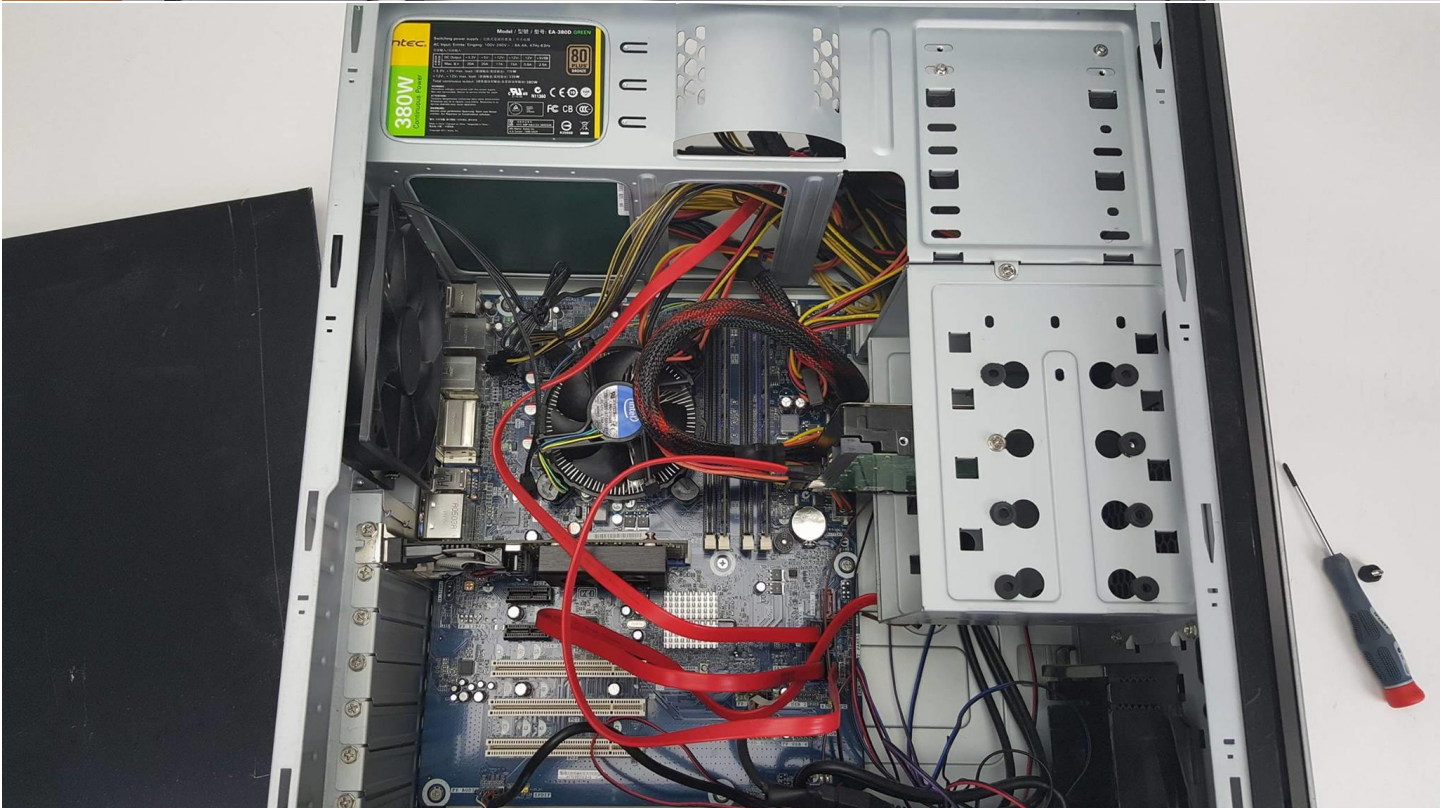
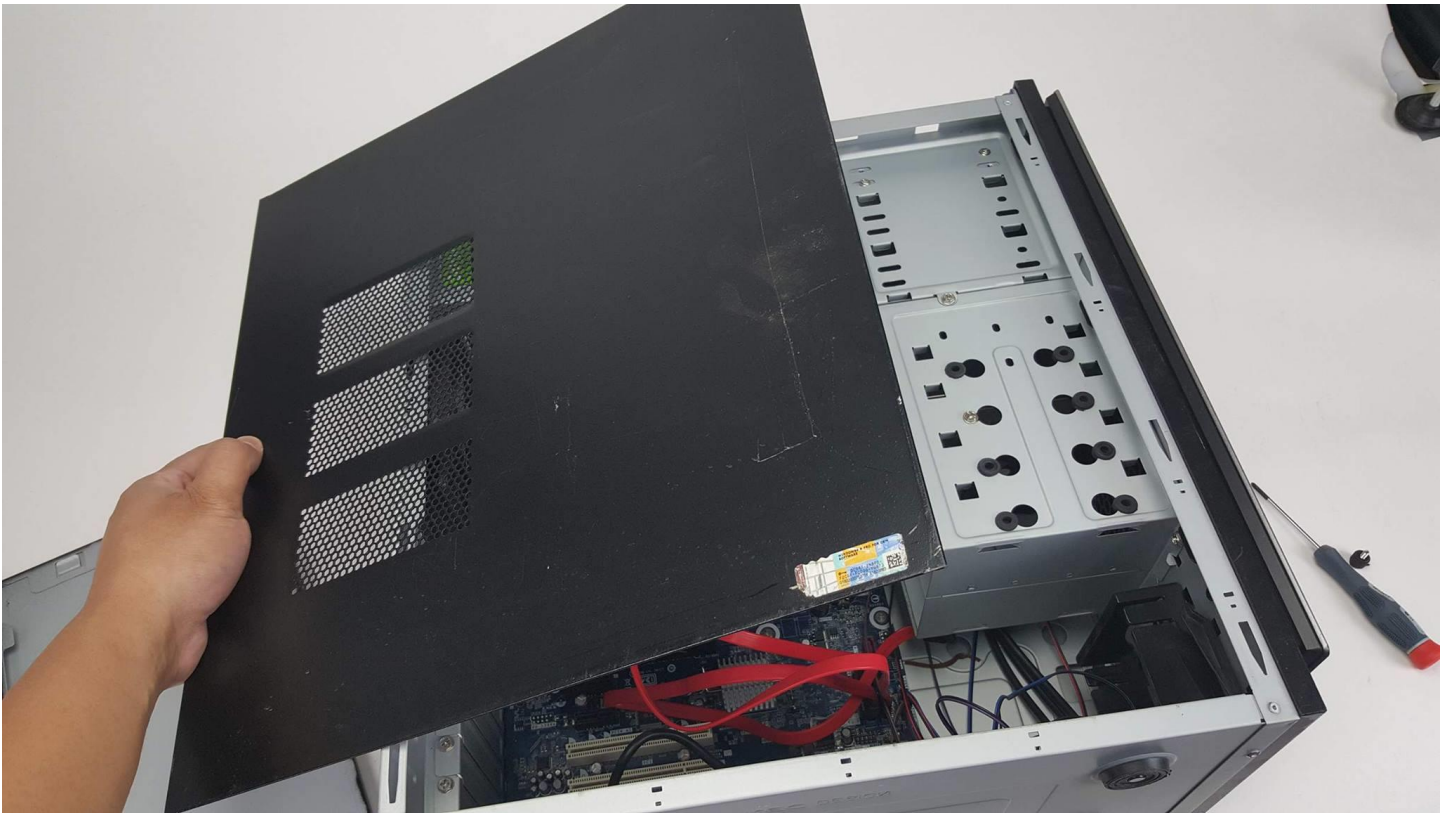
## Step 1. Remove the screws on the back of your computer.

If you are not sure which side to remove, peak through the vent holes in your computer to see if you can see a hollow shell with parts pointing upward. You should remove the side that allows access to the parts easily.

If we pretend the parts inside your computer is a city, you want to remove the side that would be in the sky

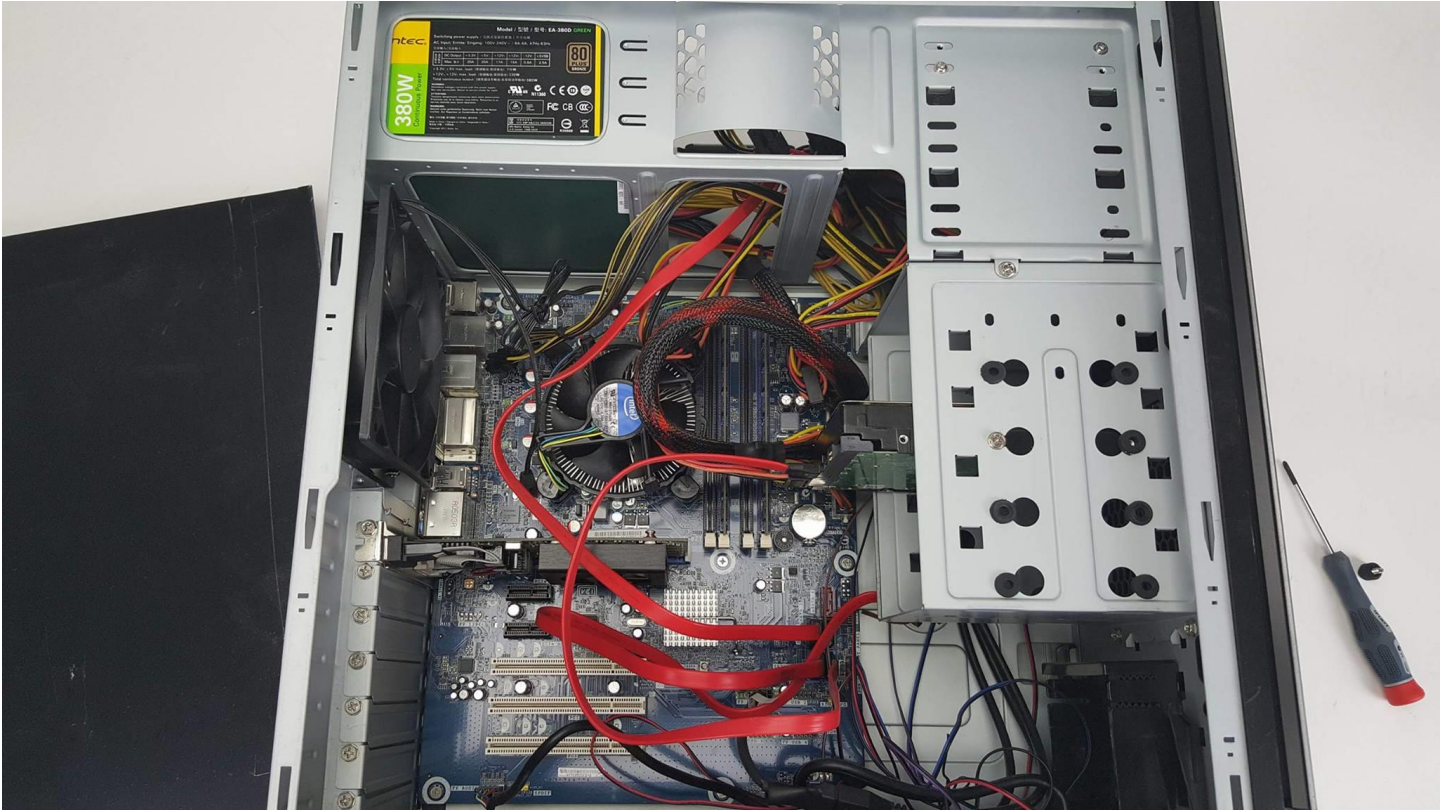


## Step 2. Remove the cover exposing the computers internals



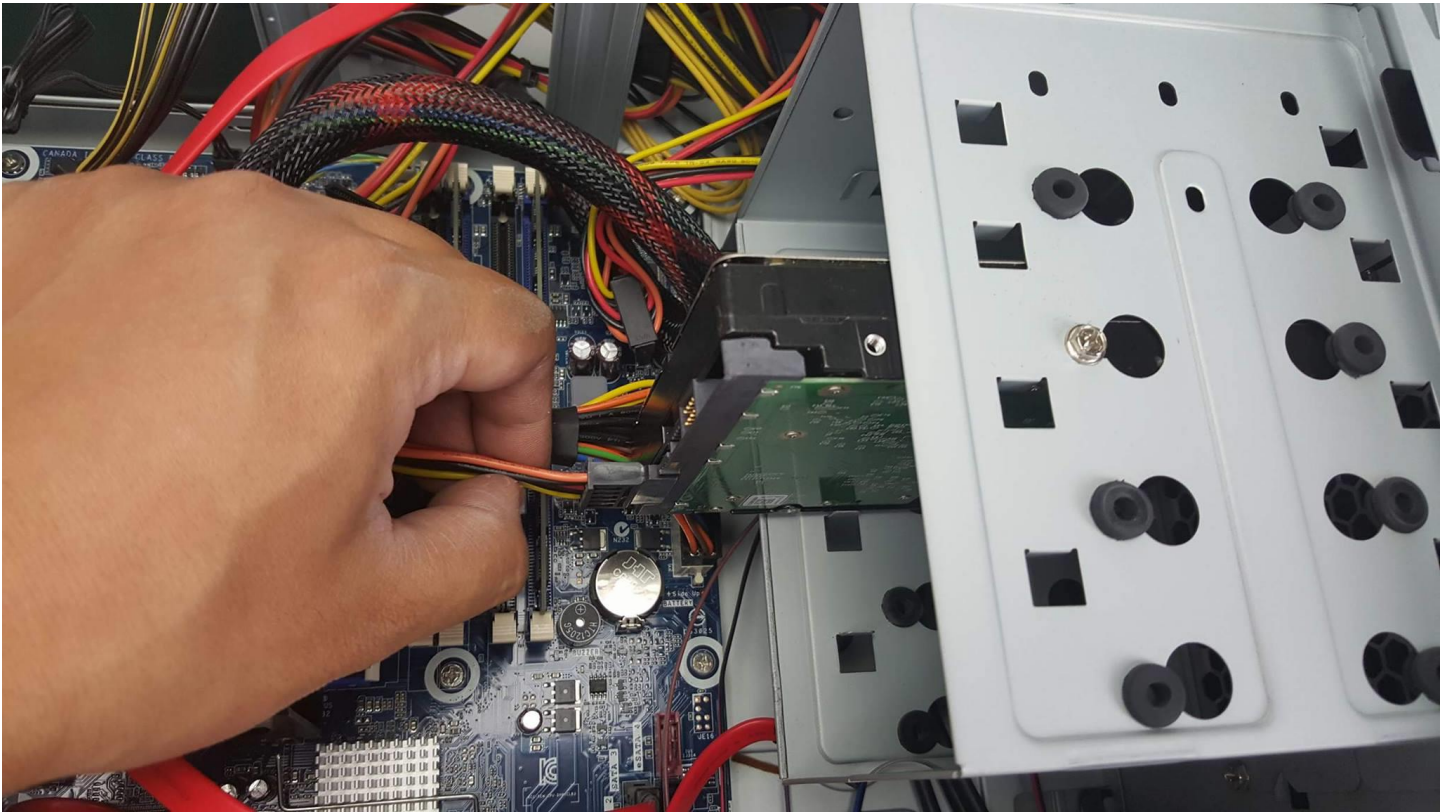


## Step 3. Locate the Hard Drive

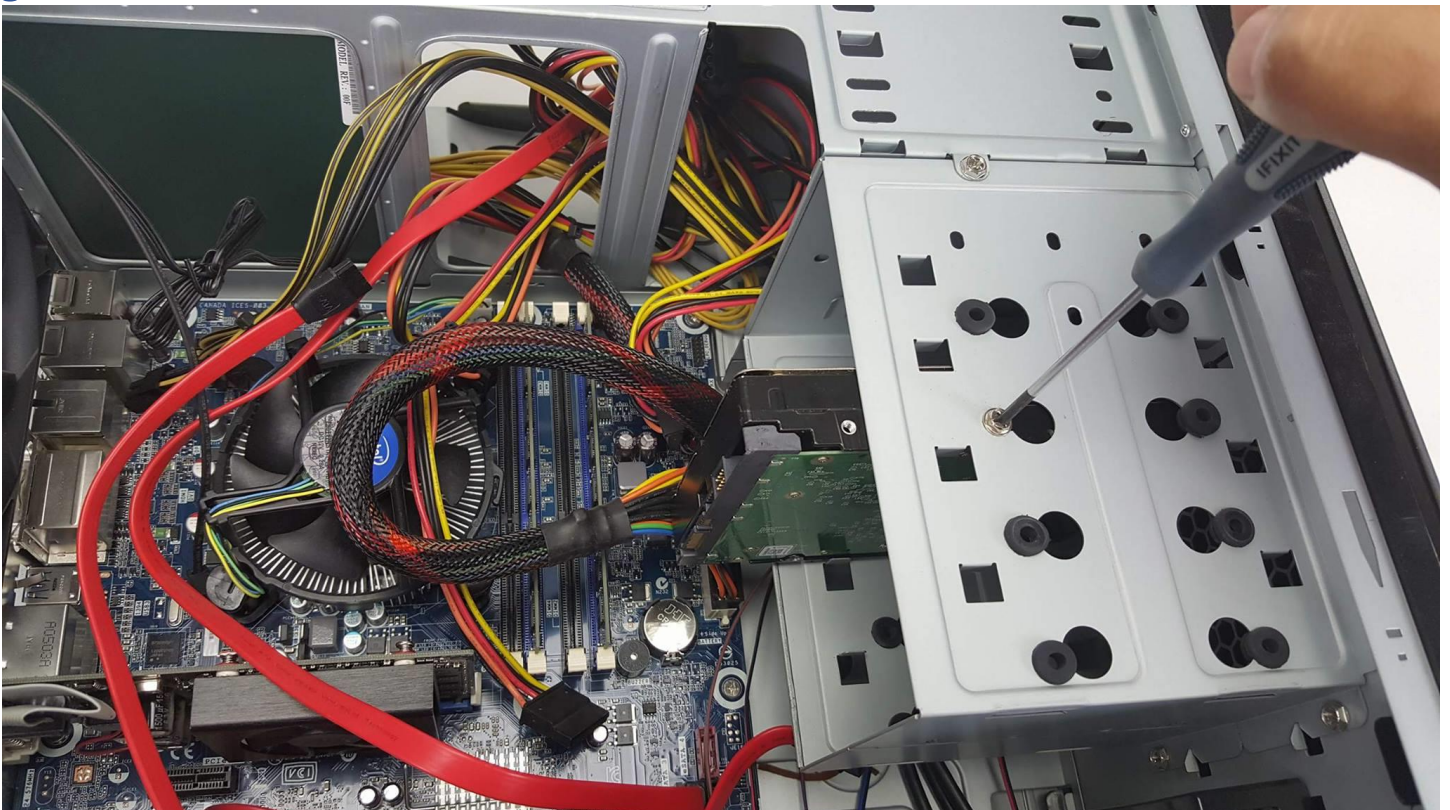




## Step 4. Unplug the hard drives connectors

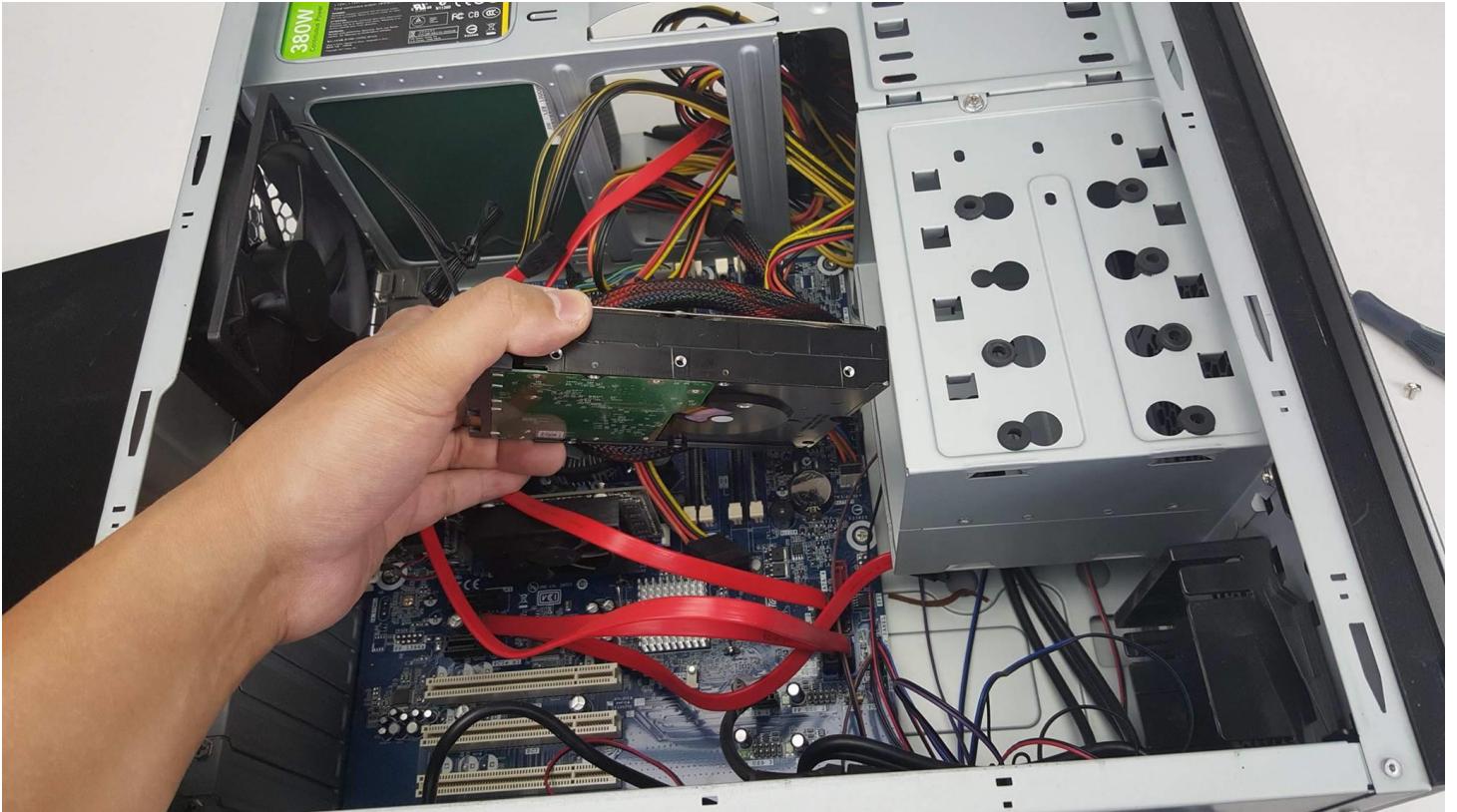


## Step 5. Remove any mounting screws with your #2 screw driver





## Step 6. Remove the Hard drive



**Step 7. Take note of the make and model of the hard drive, and the type of connector.**



**To install a new hard drive, reverse these steps!**